



2013-2014 Reflections Student Artwork, UT

Art Form Identification for both



Photography



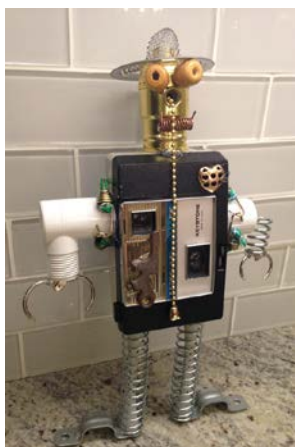
Visual Arts



2D Forms: Architectural drawing, collages, photographic collages, computer-generated image, drawing, painting, printmaking.

- Dimensions must not exceed 24x30 inches, including matting.
- Paper entries must be mounted on sturdy material.

Images of Reflections Student Artwork



3D Forms: Architectural model, carpentry, ceramics, design, dioramas, fiber work, jewelry, kites, metal etching/punch work, mobiles, sculpture and wind chimes.

- Artwork must be able to move for display purposes.
- Must include packaging materials and 3 photos of the entry (a combination of angles) for judging, ID and exhibition purposes (entries that require assembling/repairing from transporting will be disqualified).

Images of Reflections Student Artwork provided by Jean Irwin, Reflections Committee Member

Photographic Collage vs. Photomontage

What is it? What category is it? Why?



Photographic Collage = many photo prints pasted on to a flat surface.

Reflections Student Artwork
by Brynn Grambow, NH



Photomontages = 1 seamless print of multiple original photos. Produced digitally using photo editing software.

Reflections Student
Artwork by Kobie Long, IA



Computer Generated Image vs. Digital Photos

What is it? What category is it? Why?



Computer Generated Image = image created from scratch using computer software.

Computer Generated Image by Wikipedia



Digitally Edited Photo = image created from original photo(s).

Reflections Student Artwork by Hannah Shultz, VA

