



2013-2014 Reflections Student Artwork, UT

## Art Form Identification for both



**Photography**



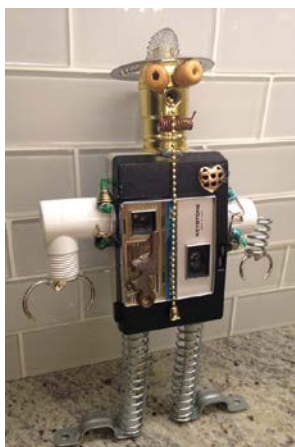
**Visual Arts**



**2D Forms:** Architectural drawing, collages, photographic collages, computer-generated image, drawing, painting, printmaking.

- Dimensions must not exceed 24x30 inches, including matting.
- Paper entries must be mounted on sturdy material.

*Images of Reflections Student Artwork*



**3D Forms:** Architectural model, carpentry, ceramics, design, dioramas, fiber work, jewelry, kites, metal etching/punch work, mobiles, sculpture and wind chimes.

- Artwork must be able to move for display purposes.
- Must include packaging materials and 3 photos of the entry (a combination of angles) for judging, ID and exhibition purposes (entries that require assembling/repairing from transporting will be disqualified).

*Images of Reflections Student Artwork provided by Jean Irwin, Reflections Committee Member*

# Photographic Collage vs. Photomontage

## What is it? What category is it? Why?



**Photographic Collage** = many photo prints pasted on to a flat surface.

Reflections Student Artwork  
by Brynn Grambow, NH



**Photomontages** = 1 seamless print of multiple original photos. Produced digitally using photo editing software.

Reflections Student  
Artwork by Kobie Long, IA



# Computer Generated Image vs. Digital Photos

## What is it? What category is it? Why?



Computer Generated Image = image created from scratch using computer software.

Computer Generated Image by Wikipedia



Digitally Edited Photo = image created from original photo(s).

Reflections Student Artwork by Hannah Shultz, VA

